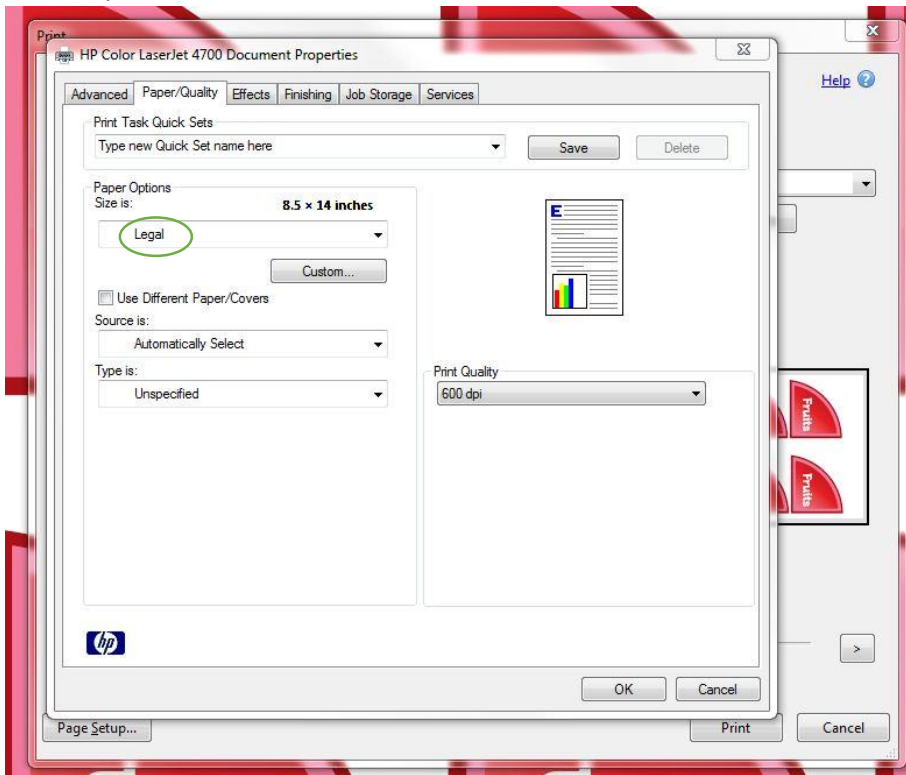
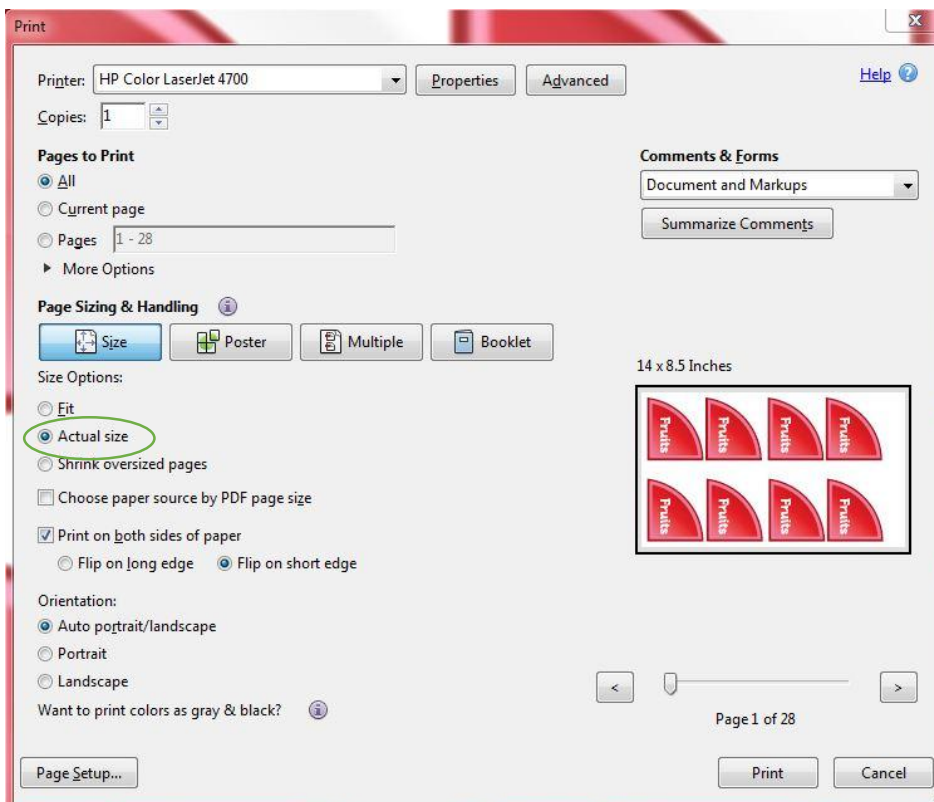


Printing Instructions/Troubleshooting Guide for Fill MyPlate Game

- Load printer with legal size paper (8.5 x 14).
- For all materials:
 - Make sure that “Legal” size paper is selected from the print menu. To do this, you may need to go into the “Properties” menu.



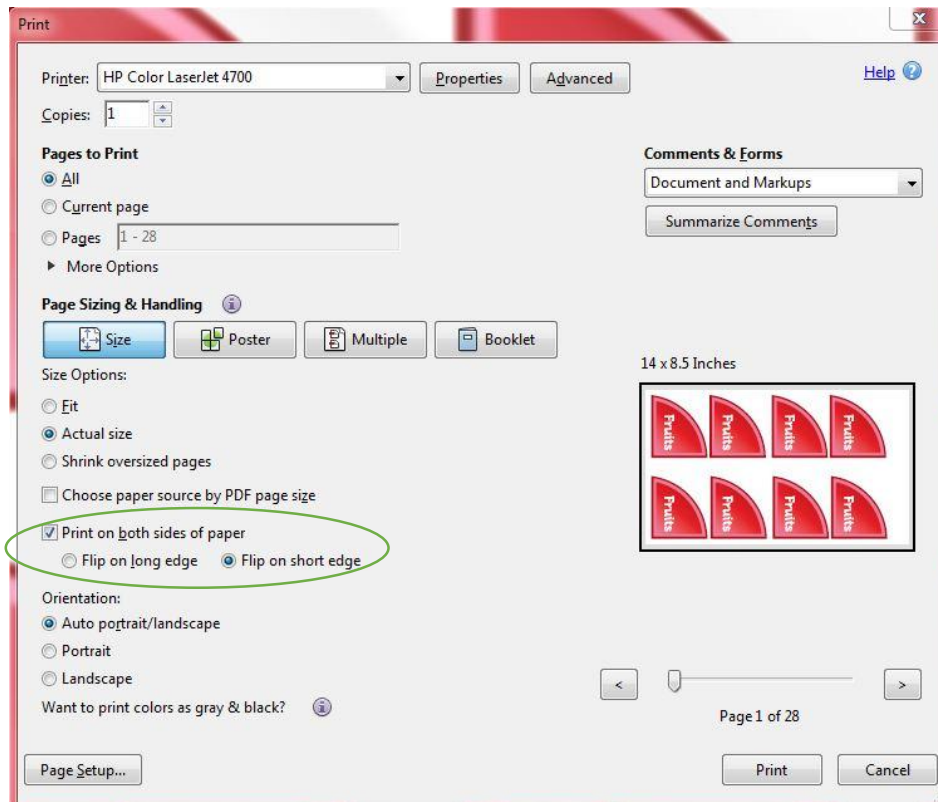
- Select “Actual Size” for best printing. (Do not select “Fit,” “Fit to Page,” or “Shrink oversized pages”.)



- For question cards:

These need to be double sided. You can do this either by using a duplex printer or by using a regular printer and feeding the card pages through the printer a second time.

 - If you choose to print a second time, be sure to test only one page first to make sure that it is facing the correct direction. Also be sure that the rest of the print menu options are the same when printing front and back to ensure consistency.
 - For duplex printers, select the following options on the print menu:
 - “Print on both sides of paper”–
 - “Flip on short edge”



- Cut out question cards based on the food-group label side of the page. The question side is designed with flexible space in case the alignment of the printer is slightly off.